



2017 ! 18 " # \$ % & ' () * + , -



2017 18 (5 1 -5 7) 1

2017 18 (5 1 -5 7)

6404

6354

4690

0.44%

1

! " # \$ % &

' (\$)

230

* + ,

- .

/ ' O

1 2

3

100-144 4

5 6

7 8 9 :

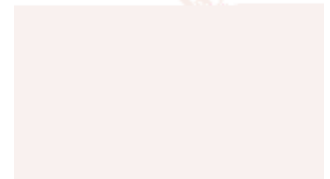
; < = >

- . ? @ A

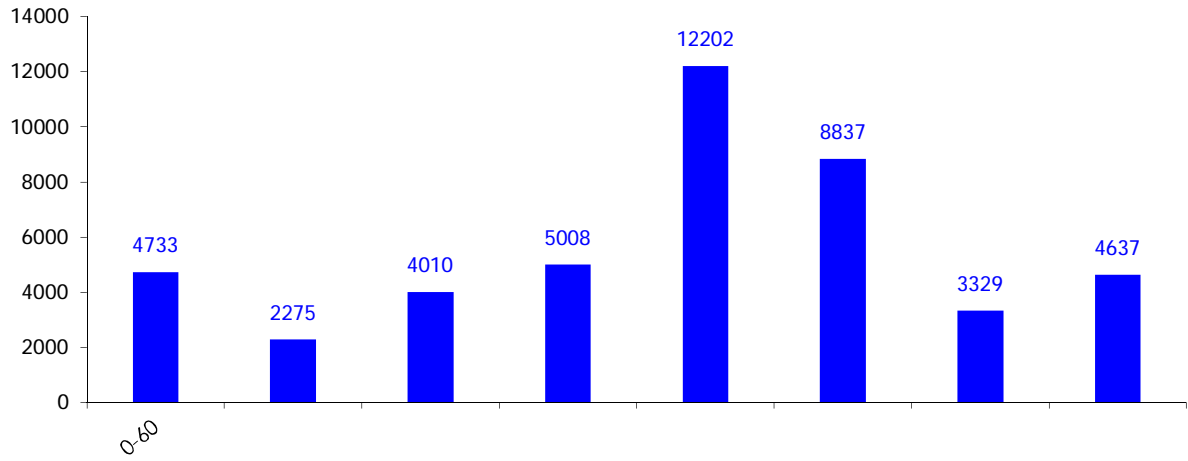
B C 9 D E F G H I

3 4 5 6 - 7

1 4 5 6 \$ 8

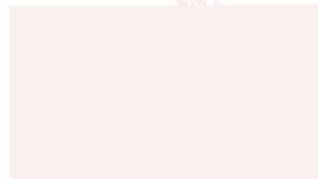






bc 2017 5 7 Y

6404 OP9QR OPS 6354 4690



OP9QR OPS



f # 1993 gh_ijkl m no p q r s 2007 786t f
2009 8 28 3 uv w xyz { | } ~ A l • pq

20 g l pq 15000 2W| m nopq
600 W | 2014 [8.2 h { 3000 l pq 314
* [4.5% pq

2014 # ' pq z
G ' (gl pq q q pqS
, f # ? OP pq S 2 q 8 pqS
S l pq pq

a ` J 2028
q 14
R0755-2216 2800
R0755-2216 2900
! " R518001

l #
a ` J 5047
\$? % 10
R0755-2216 2666
R0755-2216 2902
! " R518001

&' l no
&' (a)* S+
& S+& B, 11
R020-38972777
R020-3879 9392
! " R510620

- l
- . a/O1
23 47 301
R0757-8314 1993
R0757-8314 1980
! " R528000

l no 5'
5' 5 a* 67* 8
9 g: 21 11;
R0752-281 7800
R0752-278 0566
! " R516000

) < l no
) < = a` > 6 32 V12? 23 4 5529
R0756-332 0500
R0756-332 0700
! " R519000

@A B l
@ACD 8Z 80
E g: F 9? % 3605
R0731-8823 2555
R0731-8823 0909
! " R410005

GH HI l #
+` JGH KOa L
M & AN 14 O
R0871-3626539
R0871-3615052

P' B l no
P' Qa Q 226
RSg: 19 1910;
R0371-8614 3608
R0371-8614 3609
! " R450002

TU l no
TU <Va W

JX
JX ` aYZ
O[& A\ 908-916 Y
R0769-2314 5188
R0769-2280 6611
! " R523071

`]
`] ^ _ ` a ^ _ ? a 1426
* b? % KOc ` Y
R0791-853 0818
R0791-853 0808
! " R330038

` T l no
` T dea 59
fg: g 30 C-D\
R0771-801 1619
R0771-801 1629
! " R530000

%h B l
i J %h j Hakl 1
m q 8 02-09 Y
R0592-814 5288
R0592-814 5280
! " R361014

i' l
i' K1 158
n & Aa 19 04-05 Y
R0591-8850 5533
R0591-8850 5511
! " R350001

op l
op ` Ha O
9 g: & 16E
R0851-558 7338
R0851-558 7339
! " R550000

< l
< q 6a rc 218
stGu ` 38F
R021-5108 0200
R021-5108 0222
! " R200070

v' l no
v' r 294
vw x yz ? % 10
R0571-2888 2029
R0571-2888 3990
! " R310007

{ | B l
{ | * | a } ? a 847
~ • & B \ 19 O 21 O
R027-6883 8880
R027-6883 8830
! " R430032

? B l

+ , - .
t u vw x#yz{ | \$ } ~ • ! " # # \$ % & ' () * + , * f h
- - . OPG / O _ - [f h 1OP 2 3
4 th52677 8G +9 t : ; | < = > ? i @ A k l t B
} ~ • CD ~ EF G3 | < L9 t H G3 [| H
